



FALKEN
Secure Networks

Durable RFID tags and labels for any environment

Compliance Labels

Short or Long Run Orders • Unique Solutions • Harsh Environment Encapsulations



Part Number: WF-SM-01

Size: 6" x 2", 4" x 4" or 4" x 2"

Standard Frequencies: 915 MHz UHF

Approx. Read Range: Variable

Communication Protocol: EPC Class1 Generation 2

Applications: High-speed, Warehouses, Inventory control, Compliance, DoD

Description: SmartMark Compliance RFID tracking for all your shipments and inventories.

Fully EPC, Wal-Mart or DoD compliant, they are available in all standard sizes with your choice of inlays and can be custom printed with your company's logo and information.

Contact Information:

Call today for all your custom RFID needs:

David Kennedy, VP and Gen. Mgr. Phone: (519) 268-7604;

E-mail: david.kennedy@falkensecurenetworks.com

Web: www.falkensecurenetworks.com



FALKEN
Secure Networks

Durable RFID tags and labels for any environment

Domed RFID Labels

Short or Long Run Orders • Unique Solutions • Harsh Environment Encapsulations



Part Number: WF-SM-04

Size: 4" dia. Circle

Standard Frequencies: 915 MHz UHF

Approx. Read Range: 8 ft.

Communication Protocol:
EPC Class1 Generation 2

Applications: High-Visibility, Corporate Branding, Product Identification

Description: Domed labels provide an attractive way to provide both visual and RFID identification.

Designed to accommodate a wide variety of inlays and antennas, they can be coupled with special backings to allow use on metal. Adhesive backings provide peel-and-stick convenience.

Sizes and shapes can be adjusted to allow other inlays, frequencies and applications.



Part Number: WF-SM-05

Size: 4.25" x 4" x .0625"

Standard Frequencies: 915 MHz UHF

Approx. Read Range: 16 ft.

Communication Protocol: EPC Class1Gen 2

Applications: Manholes, Roadside Curb Marking, Outdoor Assets

Description: Domed labels provide an attractive way to provide both visual and RFID identification. Designed to accommodate a wide variety of inlays and antennas, they can be coupled with special backings to allow use on metal. Adhesive backings

provide peel-and-stick convenience and long-lasting epoxy adhesives are also available.

Sizes and shapes can be adjusted to allow other inlays, frequencies and applications.



Part Number: WF-SM-18

Size: 1.75" dia. Circle

Standard Frequencies: 13.56 MHz HF

Approx. Read Range: 5-12 inches

Communication Protocol: ISO 15693

Applications: High-Visibility, Corporate Branding, Warranty Verification, Product Identification

Description: Domed labels provide an attractive way to provide both visual and RFID identification. Designed to accommodate a wide variety of inlays and antennas, they can be coupled with special backings to allow use on metal. Adhesive backings provide peel-and-stick convenience.

Sizes and shapes can be adjusted to allow other inlays, frequencies and applications.



Part Number: WF-SM-26

Size: 2.75" x .875" x .1875"

Standard Frequencies: 915 MHz UHF

Approx. Read Range: 5-7 inches

Communication Protocol: Class1 Generation 2

Applications: High-Visibility, Corporate Branding, Warranty Verification, Product Identification

Description: Domed labels provide an attractive way to provide both visual and RFID identification. Designed to accommodate a wide variety of inlays and antennas, they can be coupled with special backings to allow use on metal. Adhesive backings provide peel-and-stick convenience.

Sizes and shapes can be adjusted to allow other inlays, frequencies and applications.

Contact Information:

Call today for all your custom RFID needs:

David Kennedy, VP and Gen. Mgr. Phone: (519) 268-7604;

E-mail: david.kennedy@falkensecurenetworks.com

Web: www.falkensecurenetworks.com

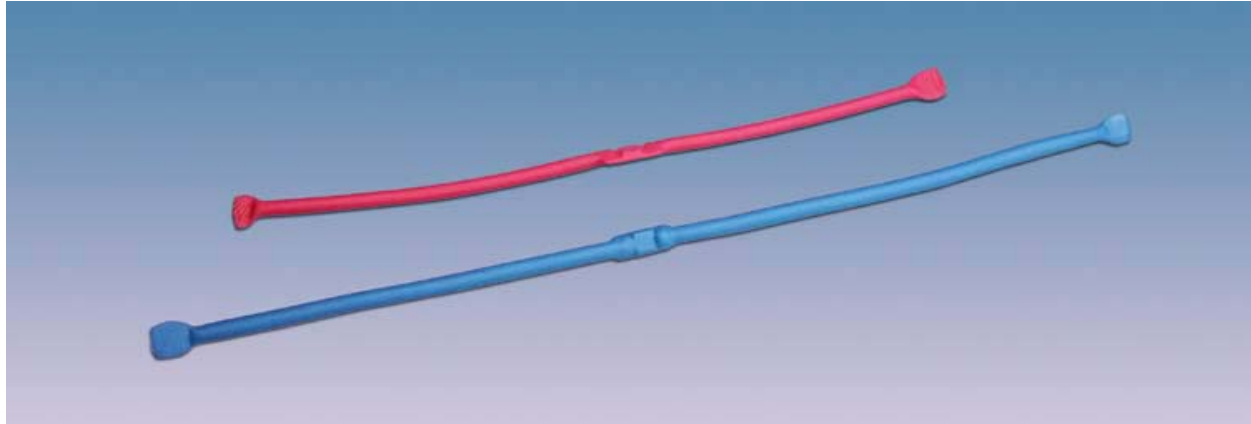


FALKEN
Secure Networks

Durable RFID tags and labels for any environment

Embeddable RFID Tags

Short or Long Run Orders • Unique Solutions • Harsh Environment Encapsulations



Part Number: WF-SM-IN01, WF-SM-IN02

Size: 4.5" x .125", 6" x .125"

Standard Frequencies: 915 MHz UHF

Approx. Read Range: Variable depending on encapsulation

Communication Protocol: EPC Class1 Generation 2

Applications: Embedded in Concrete, Wood, Plastics, Carbon composites, for critical asset tracking and location marketing.

Description: These durable wire inlays can be embedded in labels, pallets, concrete, or nearly any other substance and still provide reliable performance. Their flexible design allows them to be used in a wide variety of form factors. Because of their unique design, they can even provide a 360° read profile to reduce orientation sensitivity. **Antenna size can be adjusted to allow custom read ranges and frequencies can be adjusted for your applications.**

Contact Information

Call today for all your custom RFID needs:

David Kennedy, VP and Gen. Mgr. Phone: (519) 268-7604;

E-mail: david.kennedy@falkensecurenetworks.com

Web: www.falkensecurenetworks.com



Encapsulated Tags



Short or Long Run Orders • Unique Solutions • Harsh Environment Encapsulations



Part Number: WF-SM-02

Size: 2.75" x 2.75" x .1875"

Standard Frequencies:
13.56 MHz

Approx. Read Range:
6-12 inches

Communication Protocol:
ISO 15693

Applications: Warehouses,
Transportation, Vehicles, Harsh
environments

Description: Built of durable plastic, this
molded tag is tailored for near field reads
for access control applications. Its design

can easily accommodate a wide variety of inlays and antennas and it can be mounted securely to nearly any surface using the integrated screw/riev holes. Customize with your logo, specific information or barcodes.

Size and shape can be adjusted to allow other inlays, frequencies and applications.



Part Number: WF-SM-12

Size: 5" x 3.125" x .375"

Standard Frequencies: 915 MHz UHF

Approx. Read Range: 18 ft. / 4 ft. on metal

Communication Protocol:
EPC Class1 Generation 2

Applications: Warehouses, Pallets, Transportation,
Harsh environments

Description: Built of durable plastic, this
molded tag is perfect for metal bins & pallets
and delivers reliable performance on a

variety of surfaces including plastic, wood and metal. Designed to accommodate a wide variety of inlays and antennas, it can be mounted securely to nearly any surface using the integrated screw/rivet holes. **Size and shape can be adjusted to allow other inlays, frequencies and applications.**



Part Number: WF-SM-28

Size: 4.75" x 1.75" x .3125"

Standard Frequencies: 915 MHz UHF

Approx. Read Range: 21 ft. / 3 ft. on metal

Communication Protocol: EPC Class1 Generation 2

Applications: Warehouses, Transportation, Vehicles, Harsh Environments

Description: Built of durable plastic, this molded tag delivers reliable performance on a variety of surfaces including plastic, wood and metal. Designed to accommodate a wide variety of inlays and antennas, it can be mounted securely to nearly any surface using the integrated screw/rivet holes. Include your own logo, message or barcode.

Size and shape can be adjusted to allow other inlays, frequencies and applications.



Part Number: WF-SM-UTS

Size: 7" x 2.75" x .75"

Standard Frequencies:
915 MHz UHF or tuned to your specs

Approx. Read Range: 25 ft. / 8 ft. on metal

Communication Protocol:

Applications: Warehouses, Pallets,
Aisle Markers, Embedded

Description: Designed as a reusable universal rugged tagging solution, these tags

are available with a wide variety of bases for use in nearly any setting. Perfect for applications that require embedding in concrete or semi-permanent RFID installations, they can quickly and easily be tailored to your application and mounted on a wide variety of surfaces including metal, wood, or plastic.

Contact Information:

Call today for all your custom RFID needs:

David Kennedy, VP and Gen. Mgr. Phone: (519) 268-7604;

E-mail: david.kennedy@falkensecurenetworks.com

Web: www.falkensecurenetworks.com



Harsh Environment Tags



Short or Long Run Orders • Unique Solutions • Harsh Environment Encapsulations



Part Number: WF-SM-03

Size: 2.5" x 3.75" x .0625"

Standard Frequencies: 915 MHz UHF

Approx. Read Range: 5-7 ft.

Communication Protocol: EPC Class1
Generation 2

Applications: Security, Warehouses, Harsh
Environments, Outdoor Asset Identification

Description: This tag provides both long-range
identification and high-visibility. Ideal for
identifying outdoor assets, it can be engraved
with your custom messages and is available
in a variety of colors and configurations.

**Size and shape can be adjusted to allow
applications**



Part Number: WF-SM-14

Size: 6.5" x 8" x .1875"

Standard Frequencies:
860-960 MHz UHF, "World" Tag

Approx. Read Range: 15 ft. / 2 ft. on metal

Communication Protocol:
EPC Class1 Generation 2

Applications: Racks, Warehouses, Asset
Tracking, Barcodes, Metal Mount.

Description: Perfect for warehouses in technology transition, this rack tag merges standard Barcodes with RFID technology. Using an isolating adhesive offset, it can be successfully mounted on metallic racks or pallets. Add your logos, messages or color coding.

Sizes can be adjusted to allow other inlays, frequencies and applications.



Part Number: WF-SM-17

Size: 3.25" x 4.25"

Standard Frequencies:
860-960 MHz UHF , "World" Tag

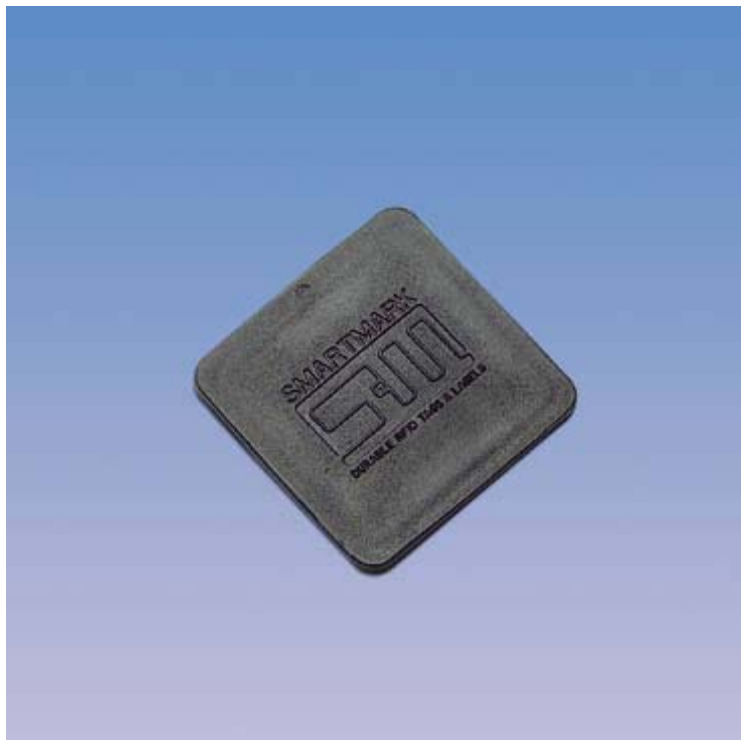
Approx. Read Range: 12 ft.

Communication Protocol:
EPC Class1, Generation 2

Applications: Retail, Harsh Environments, WIP

Description: Designed for the rigors of harsh or chemical laden environments, these "Hang Tags" feature special laminates that protect the inlay. More rigid than standard tags, they can include adhesives or be attached by wire or other means to make them removable.

Sizes can be adjusted to allow other inlays, frequencies and applications.



Part Number: WF-SM-29

Size: 1.3125" x 1.3125" x .125"

Standard Frequencies: 915 MHz UHF

Approx. Read Range: 3 ft.

Communication Protocol:
EPC Class1 Generation 2

Applications: Harsh Environments, Laundry / Dry Cleaning, Retail, Uniforms

Description: Designed as a low-profile solution for garment tracking, these little tags can withstand damp, hot, and rough-handling environments.

Size and shape can be adjusted to allow other inlays, frequencies and applications.



Part Number: WF-SM-42

Size: 2.75 " x .25" x .25" (1.375" dia.)

Standard Frequencies: 915 MHz UHF

Approx. Read Range: 3 ft. - 9 ft.

Communication Protocol:
EPC Class 1 Generation 2

Applications: Harsh Environments, Metal Mount, Cables, Carts, Pipes

Description: Fully encased in hardened plastic, provides excellent readability from any direction. Simple to attach, it's perfect for harsh

environments and can be used on metal surfaces or with pipes and cable.

Size and shape can be adjusted to allow other inlays, frequencies and applications.

Contact Information

Call today for all your custom RFID needs:

David Kennedy, VP and Gen. Mgr. Phone: (519) 268-7604;

E-mail: david.kennedy@falkensecurenetworks.com

Web: www.falkensecurenetworks.com



FALKEN
Secure Networks

Durable RFID tags and labels for any environment

Impact Resistant Tags

Short or Long Run Orders • Unique Solutions • Harsh Environment Encapsulations



Part Number: WF-SM-12IR

Size: 5" x 3.125" x .5"

Standard Frequencies: 915 MHz UHF

Approx. Read Range: 25 ft. / 5 ft. on metal

Communication Protocol:
EPC Class1 Generation 2

Applications: Warehouses, Pallets,
Transportation, Harsh environments

Description: The impact resistant version of
our standard pallet tag, this molded tag

delivers reliable performance on a variety of surfaces including plastic, wood and metal. Designed to accommodate a wide variety of inlays and antennas, it can be mounted securely to nearly any surface using the integrated screw/rivet holes.

Size and shape can be adjusted to allow other inlays, frequencies and applications.



Part Number: WF-SM-13IR

Size: 7.625" x .8125" x .6875"

Standard Frequencies: 915 MHz UHF

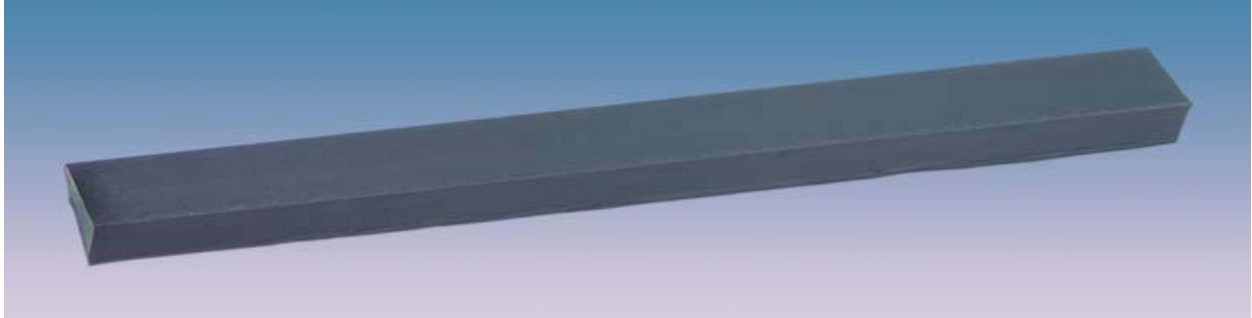
Approx. Read Range: 20 ft. / 7 ft. on metal

Communication Protocol: EPC Class1 Generation 2

Applications: Automotive, Transportation, Vehicles, Harsh Environments

Description: The impact resistant version of our standard metal mount tag, this versatile construction allows the tracking of metal bins or other parts in WIP situations or warehouse environments. Durable and metal mountable, the tag can be exposed to many rigorous environments and still function perfectly.

Size and shape can be adjusted to allow other inlays, frequencies and applications.



Part Number: WF-SM-30

Size: 6.6875" x .75" x .5"

Standard Frequencies: 915 MHz UHF

Approx. Read Range: 15 ft. / 3 ft. on metal

Communication Protocol: EPC Class1 Generation 2

Applications: Warehouse, Transportation, Vehicles, Buried Pipes, Harsh Environments

Description: Embedded directly in tire rubber, this tag offers a low profile way to track buried pipelines, or vehicles. Used in warehouses, it is highly impact resistant and offers excellent read ranges.

Size and shape can be adjusted to allow other inlays, frequencies and applications.

Contact Information

Call today for all your custom RFID needs:

David Kennedy, VP and Gen. Mgr. Phone: (519) 268-7604;

E-mail: david.kennedy@falkensecurenetworks.com

Web: www.falkensecurenetworks.com



Integrated Tie Tags



Short or Long Run Orders • Unique Solutions • Harsh Environment Encapsulations



Part Number: WF-SM-ZT02

Size: 5.5" x .25" x .25" (12" Ziptie)

Standard Frequencies: 915 MHz UHF

Approx. Read Range: 12 ft. / 4 ft. on metal

Communication Protocol:
EPC Class 1 Generation 2

Applications: Metal Mount, Harsh Environments, Totes, Carts, Pipes

Description: Designed to be easily attached to a wide variety of containers, this tag offers exceptional read ranges and is

also metal mountable! The bendable shape and integrated zip tie make it perfect for tagging against round surfaces.

Size and frequencies can be adjusted to fit your application.



Part Number: WF-SM-ZT02

Size: 5.5" x .25" x .25" (12" Ziptie)

Standard Frequencies: 915 MHz UHF

Approx. Read Range: 12 ft.

Communication Protocol:
EPC Class 1 Generation 2

Applications: Metal Mount, Harsh Environments, Totes, Carts, Pipes

Description: Designed to be easily attached to a wide variety of containers, this tag offers exceptional read ranges! The bendable shape and integrated zip tie make it perfect for tagging against round surfaces.

Size and frequencies can be adjusted to fit your application.



Part Number: WF-SM-PT

Size: 5.5" x .75" x .5" (Var. integrated loop)

Standard Frequencies: 915 MHz UHF

Approx. Read Range:
20 ft. / 12 ft. on metal

Communication Protocol:
EPC Class 1 Generation 2

Applications: Pipelines, Metal Mount,
Warehouses

Description: Designed for use with metal pipes or other high-interference environments, this tag has an integrated rubber loop for easy attachment. Made of vulcanized rubber, it is both harsh-

environment ready and impact resistant.

Size and frequencies can be adjusted to fit your application.

Contact Information

Call today for all your custom RFID needs:

David Kennedy, VP and Gen. Mgr. Phone: (519) 268-7604;

E-mail: david.kennedy@falkensecurenetworks.com

Web: www.falkensecurenetworks.com



FALKEN
Secure Networks

Durable RFID tags and labels for any environment

Metal Mount Tags



Short or Long Run Orders • Unique Solutions • Harsh Environment Encapsulations



Part Number: WF-SM-SA

Size: 7" x 8"

Standard Frequencies: 915 MHz UHF

Approx. Read Range: 5 ft. / 3 ft. on metal

Communication Protocol: EPC Class1 Generation 2

Applications: Cable, Fiber Optic, Medical, Metal Mount, Tote Handles, Harsh Environments

Description: A completely unique design, our snap-around tags allow you to bring the benefits of RFID to new applications. Use these simple-to-install tags to mark cable runs, carts or pipelines, or snap them around any circular surface.

Size can be adjusted to allow other inlays, frequencies and applications.



Part Number: WF-SM-13

Size: 7.625" x .8125" x .6875"

Standard Frequencies: 915 MHz UHF

Approx. Read Range: 18 ft. / 6 ft. on metal

Communication Protocol: EPC Class1 Generation 2

Applications: Automotive, Transportation, Vehicles, Harsh Environments

Description: Perfect for tracking metal bins or parts in WIP situations, this durable, metal mount tag can be exposed to the most rigorous environments and still function perfectly. Use where exposure to oil, gasoline, MEK, alcohol, acetone or other chemicals is unavoidable.

Size and shape can be adjusted to allow other inlays, frequencies and applications.



Part Number: WF-SM-22

Size: 4.5" x 1.125" x .1875"

Standard Frequencies: 860-960 MHz UHF, "World" Tag

Approx. Read Range: 25 ft. / 3 ft. on metal

Communication Protocol: EPC Class1 Generation 2

Applications: Metal Mount, Automotive, Fleets, Warehouses, Metal Carts

Description: This tag can be used to stealthily identify fleet trucks, tractors, forklifts or other critical assets. Mounted on the inside window of a vehicle, it offers unparalleled read ranges, but can also be used directly on metal surfaces.

Sizes can be adjusted to allow other inlays, frequencies and applications.



Part Number: WF-SM-23

Size: 1.625" x 2" x .1875"

Standard Frequencies: 915 MHz UHF

Approx. Read Range: 18 ft. / 2 ft.
on metal

Communication Protocol: EPC Class1
Generation 2

Applications: Metal Mount, Automotive,
Fleets, Warehouses

Description: This low-profile tag can be
used to stealthily identify fleet trucks,
tractors, forklifts or other critical assets.
Mounted on the inside window of a vehicle, it

offers excellent read-ranges, but can also be used directly on metal surfaces.

Sizes can be adjusted to allow other inlays, frequencies and applications.



Part Number: WF-SM-24

Size: 6" x .375"

Standard Frequencies: 915 MHz UHF

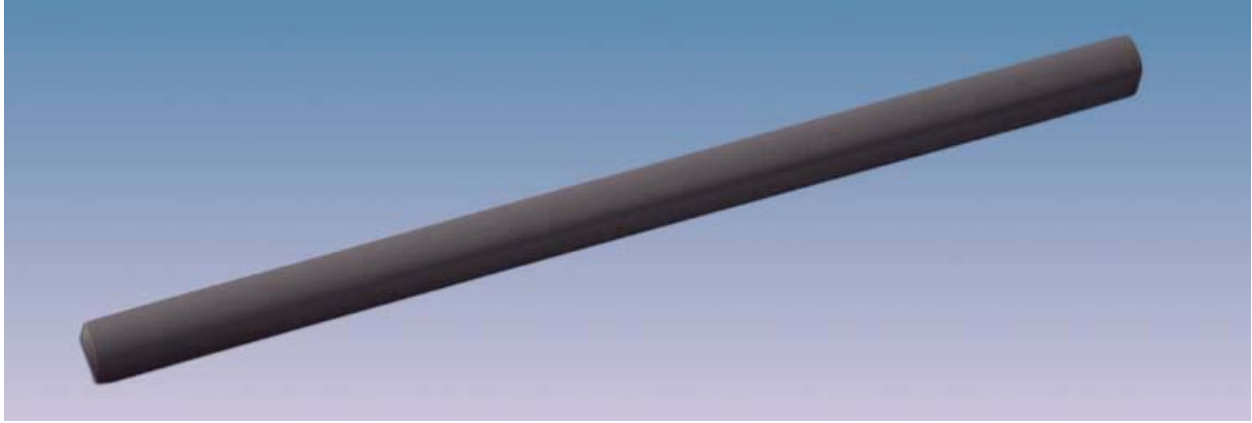
Approx. Read Range: 15 ft. / 3 ft. on metal

Communication Protocol: EPC Class1 Generation 2

Applications: Low-Profile, WIP, Computer Tracking, Component Identification

Description: Built to fit where other tags don't, this unique construction provides serious performance in a sleek low profile design. Fully metal mount and flexible, it's perfect for a wide variety of applications. Adhesive backings provide peel-and-stick convenience.

Size and shape can be adjusted to allow other inlays, frequencies and applications



Part Number: WF-SM-25

Size: 6" x .25" x .25"

Standard Frequencies: 915 MHz UHF

Approx. Read Range: 20 ft. / 9 ft. on metal

Communication Protocol: EPC Class1 Generation 2

Applications: Automotive, Transportation, Vehicles, Harsh Environments

Description: Perfect for tracking engines or other automotive parts, this durable tag can be exposed to the harsh environments and still function perfectly. Bending to accommodate convex or concave surfaces, it provides a low-profile solution for all your metal mount RFID needs.

Size and shape can be adjusted to allow other inlays, frequencies and applications.



Part Number: WF-SM-27

Size: 6.75" x 3"

Standard Frequencies: 915 MHz UHF

Approx. Read Range: 20 ft. / 7 ft. on metal

Communication Protocol:

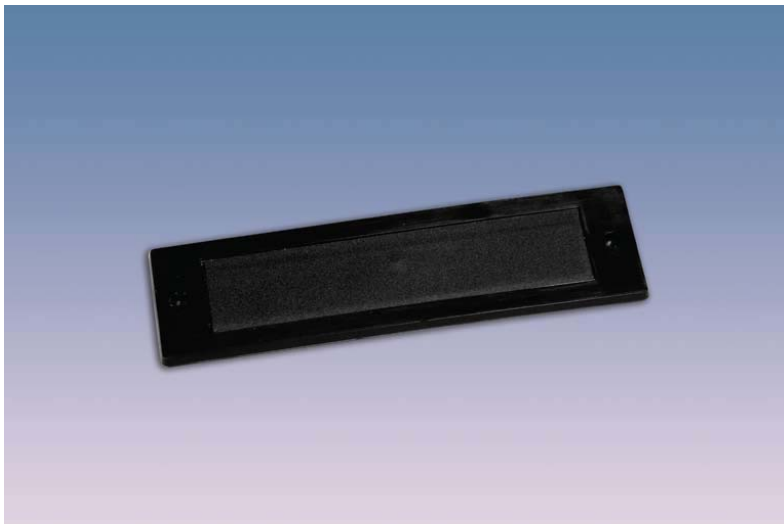
EPC Class1 Generation 2

Applications: Warehouses, High-visibility, Barcode integration

Description: Perfect for warehouses in technology transition, this rack tag merges standard Barcodes with RFID technology.

Using an isolating adhesive offset, it can be successfully clipped on metallic racks or pallets.

Sizes can be adjusted to allow other inlays, frequencies and applications.



Part Number: WF-SM-40

Size: 4.125" x 1.25" x .125"

Standard Frequencies: 915 MHz UHF

Approx. Read Range:

12 ft. / 4 ft. on metal

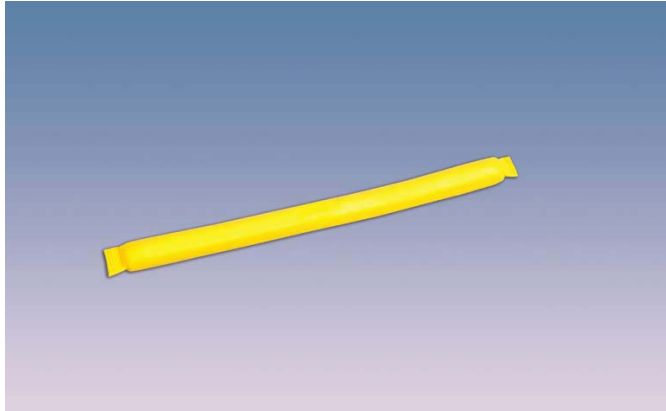
Communication Protocol:

EPC Class 1 Generation 2

Applications: High Value Assets, Metal Mount, Automotive, Fleets, Warehouses, WIP

Description: Perfect for long-term marking of critical assets like laptops and computers, this tag is also metal mountable. Flexible design can be screwed, adhered or riveted in place and is at home in both corporate and industrial settings. Hardened plastic offers high durability.

Size and shape can be adjusted to allow other inlays, frequencies and applications.



Part Number: WF-SM-IN03

Size: 5.5" x .25" x .25"

Standard Frequencies: 915 MHz UHF

Approx. Read Range: 20 ft. / 9 ft. on metal

Communication Protocol: EPC Class 1

Applications: High Value Assets, Metal Mount, Automotive, Fleets, Warehouses, WIP

Description: Rugged shrink wrap protects this flexible and embeddable RFID tag from harsh environments and the elements. Metal mount ready, it offers exceptional read ranges and reliability.
Size and frequencies can be adjusted to fit your application.

Contact Information

Call today for all your custom RFID needs:

David Kennedy, VP and Gen. Mgr. Phone: (519) 268-7604;

E-mail: david.kennedy@falkensecurenetworks.com

Web: www.falkensecurenetworks.com



FALKEN
Secure Networks

Durable RFID tags and labels for any environment



Secure Specialty Labels

Short or Long Run Orders • Unique Solutions • Harsh Environment Encapsulations



Part Number: WF-SM-15

Size: 4.25" x 1.25"

Standard Frequencies:
915 MHz UHF

Approx. Read Range: 15 ft.

Communication Protocol:
EPC Class1 Generation 2

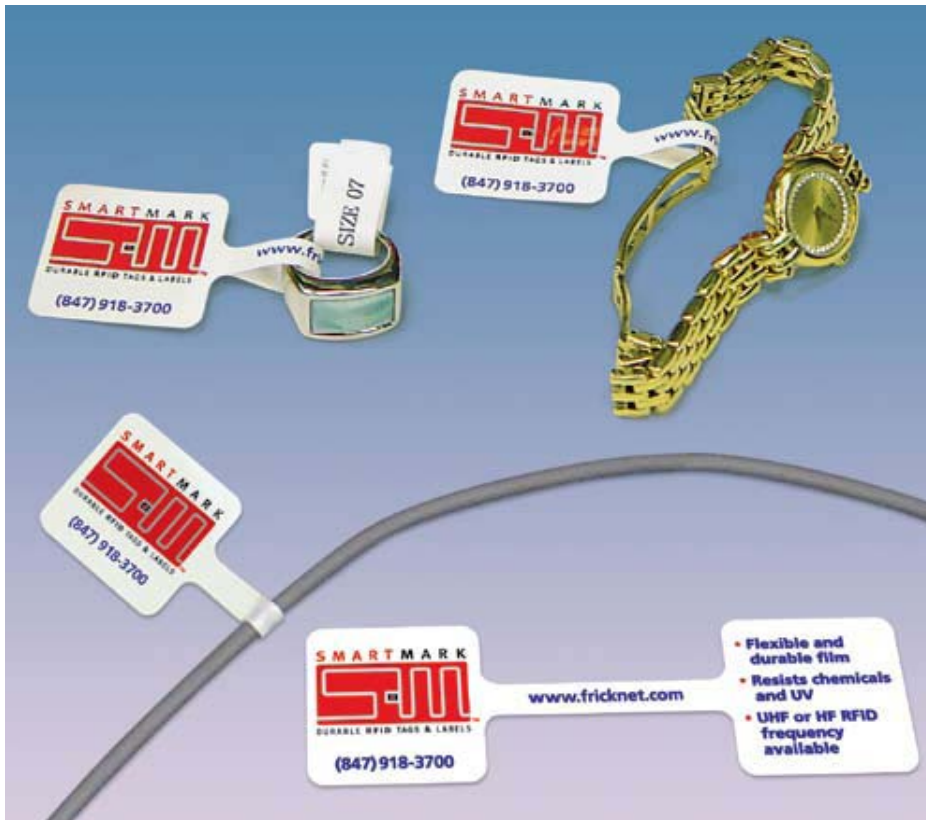
Applications: Retail,
Liquids, Metal Mount, Food
and Beverage

Description: The unique
construction of this tag
allows use with liquids or
other hard to read materials.

Built with [AuthentiCal™](#)
[Secura-T technology](#), the
tag is tamper-evident and is

perfect for retail and food and beverage environments.

Sizes can be adjusted to allow other inlays, frequencies and applications.



Part Number: WF-SM-16

Size: 4.25" x 1.25"

Standard Frequencies:
915 MHz UHF

Approx. Read Range: 2.5 ft.

Communication Protocol:
EPC Class1 Generation 2

Applications: Retail, Jewelry,
Cables, Metal Mount

Description: Designed to track high value items or identify cable runs, this tag can be used on metallic objects. When built with [AuthentiCal™ Secura-T technology](#), the tag is tamper-evident and is perfect for retail environments. Your serialized barcodes or logo can be added to positively identify cable runs.

Sizes can be adjusted to allow other inlays, frequencies and applications.

Contact Information:

Call today for all your custom RFID needs:

David Kennedy, VP and Gen. Mgr. Phone: (519) 268-7604;

E-mail: david.kennedy@falkensecurenetworks.com

Web: www.falkensecurenetworks.com